

CASE ANALYSIS REPORT AT

International Distance Training Course on the Application of
Satellite Meteorological products

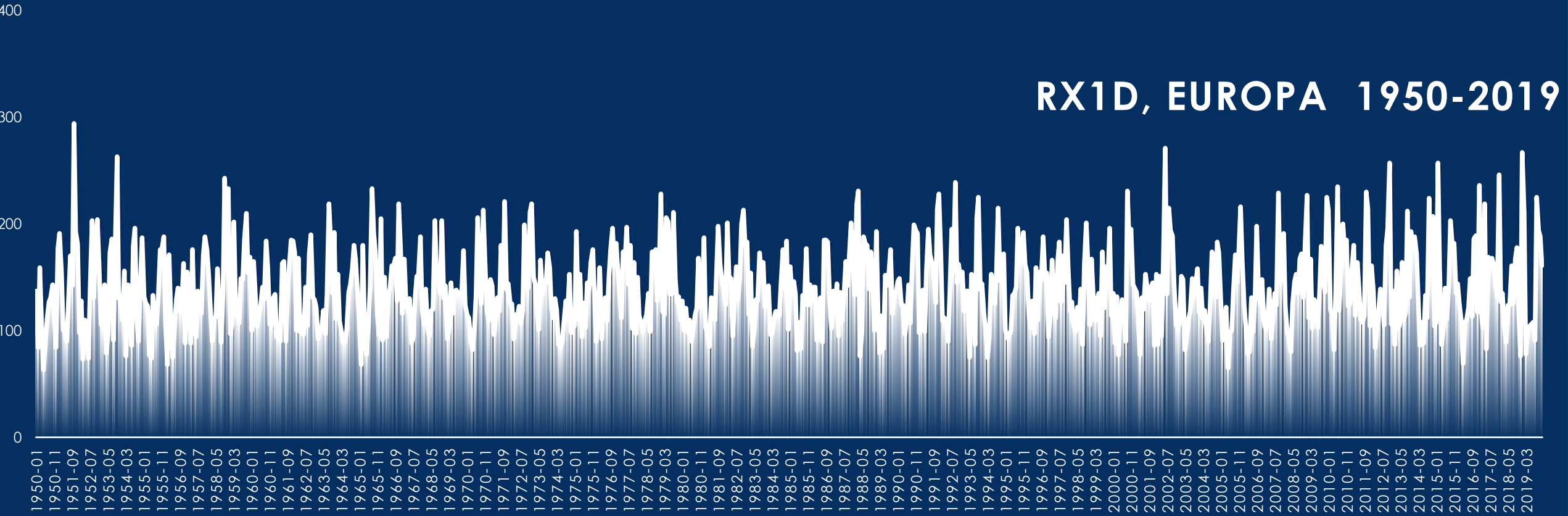
Marieta Dimitrova marieta.dimitrova@meteo.bg

Nada Rudan n.rudan@rh mzrs.com

October 2020

SEVERE CONVECTIVE WEATHER PROCESS AT SOUTH EASTERN EUROPA IN OCTOBER 2020, FIRST WEEK

RX1D, EUROPA 1950-2019



climatology 1951-2019
(data source ECA&D)

	jan	feb	mar	apr	may	jun	jul	aug	sep	oct	nov	dec	Ann
RX1D	267	257	231	219	202	271	206	233	239	294	257	246	294
maxD (DayYear)	18-2019	09-2015	06-1988	26-2017	31-1979	19-2002	18-1970	23-1965	27-1992	17-1951	12-2012	11-2017	17-10-1951

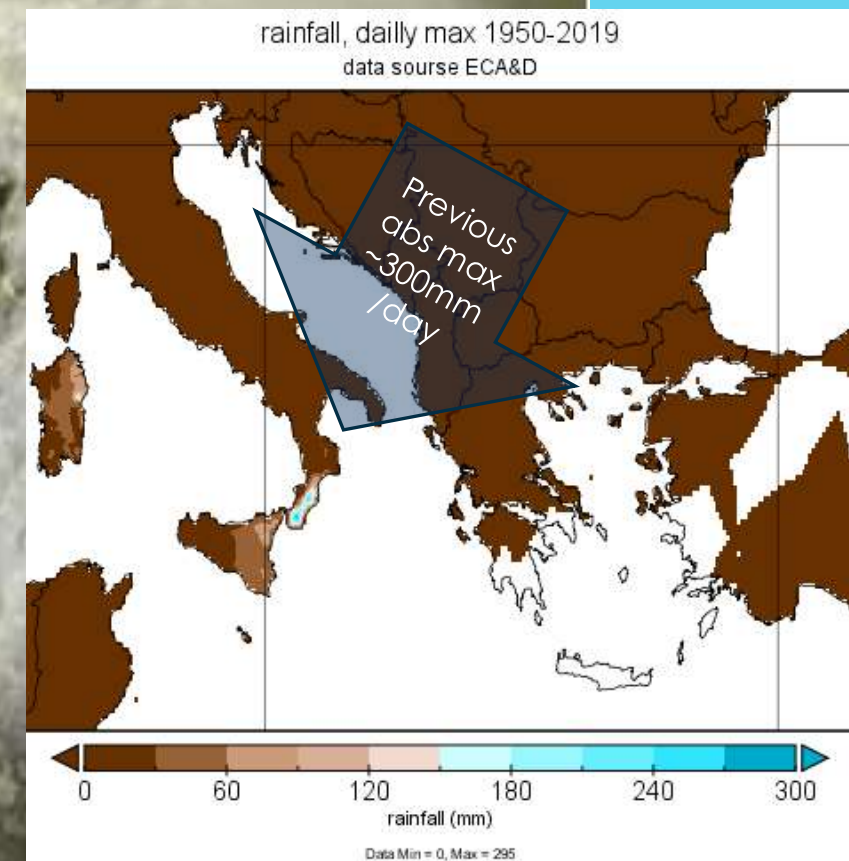
04/05 Oct 2020

Europa

The first week of October
2020

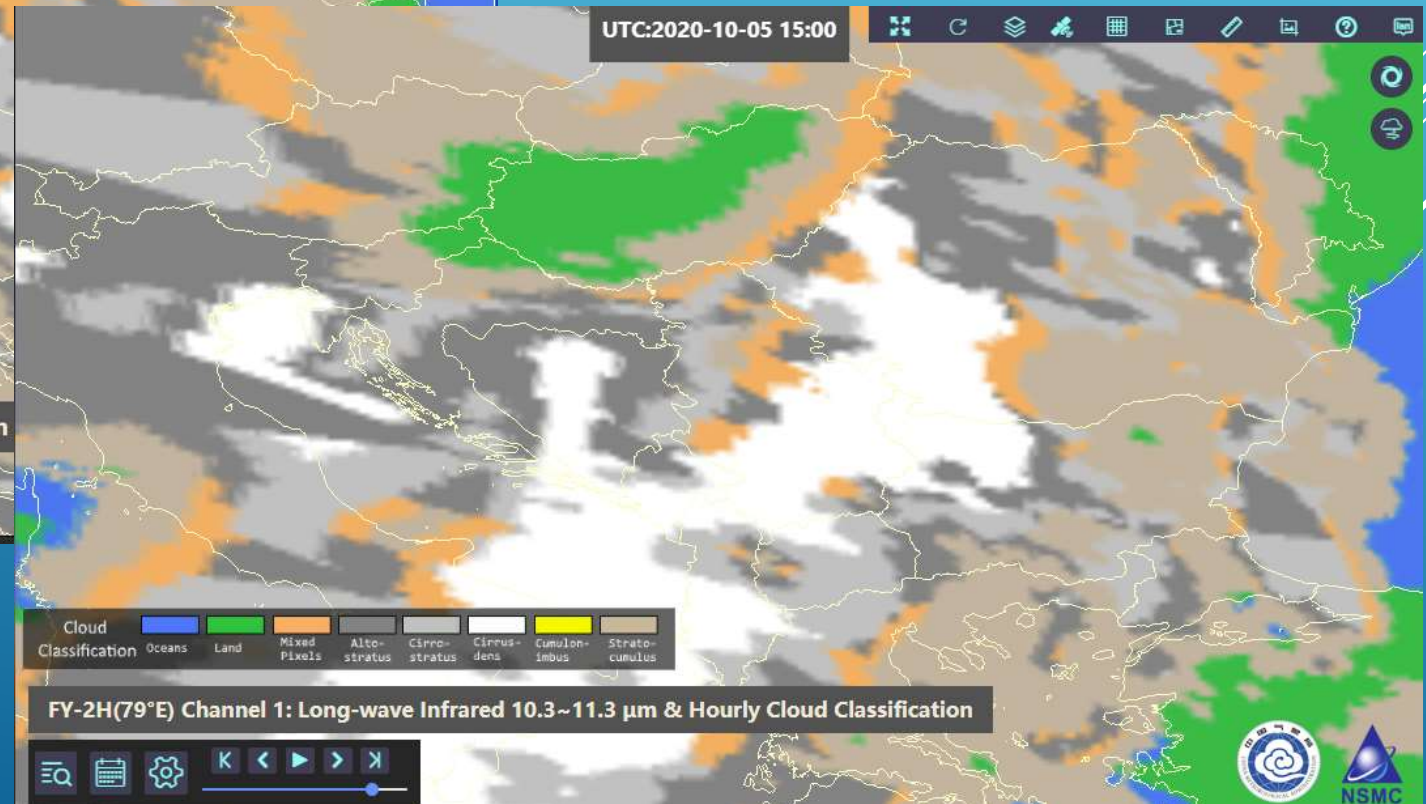
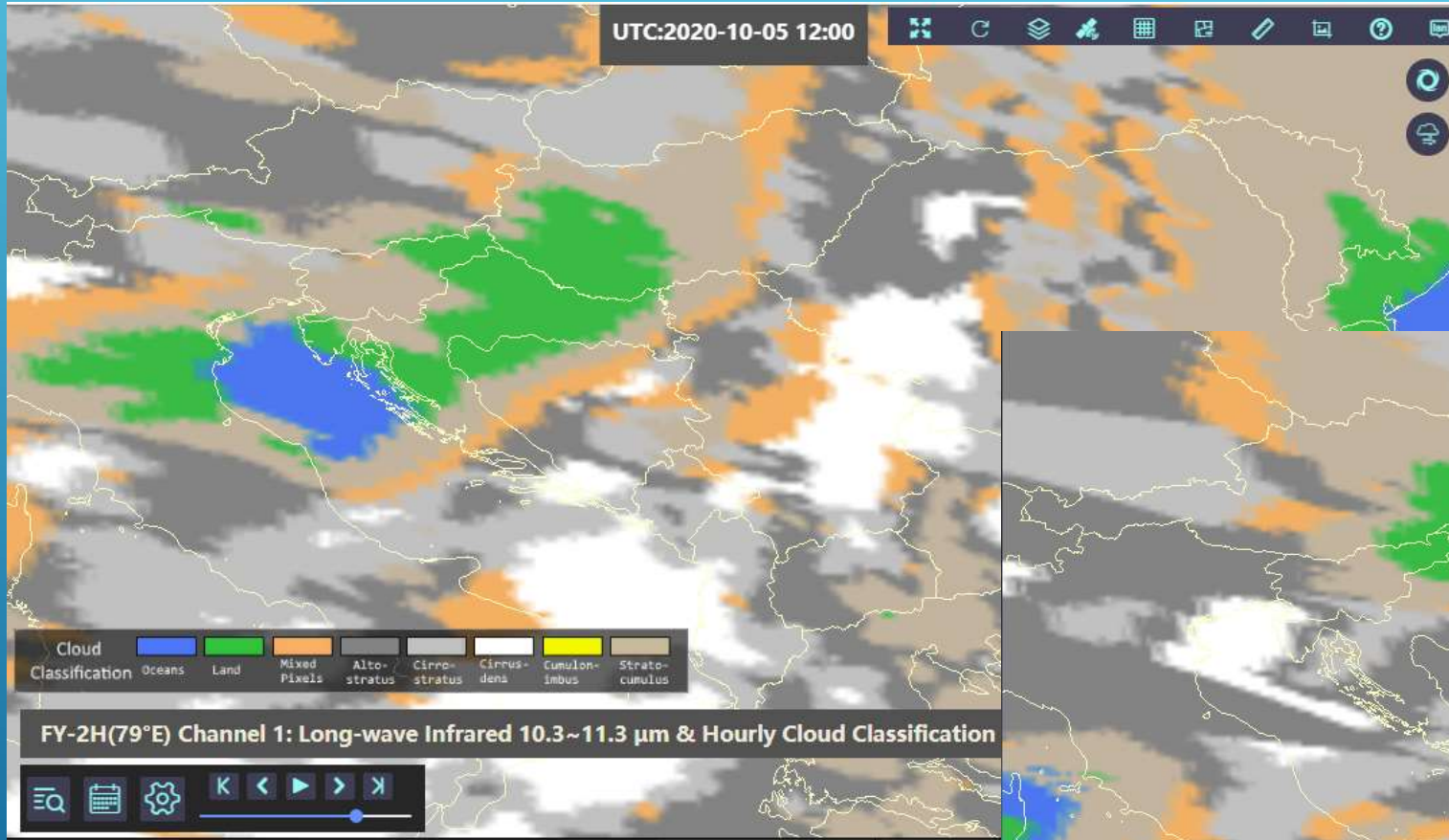
SEVERE CONVECTIVE
WEATHER PROCESS AT SOUTH
EASTERN EUROPA IN
OCTOBER 2020, FIRST WEEK
DURING WHICH IS
OVERCOMED THE PREVIOUS
DAILY MAXIMUM OF
PRECIPITATION

► [Western Europa has been occurred
historical rainfall per day (~600mm)]



FENGYUN SATELLITE FY-2H

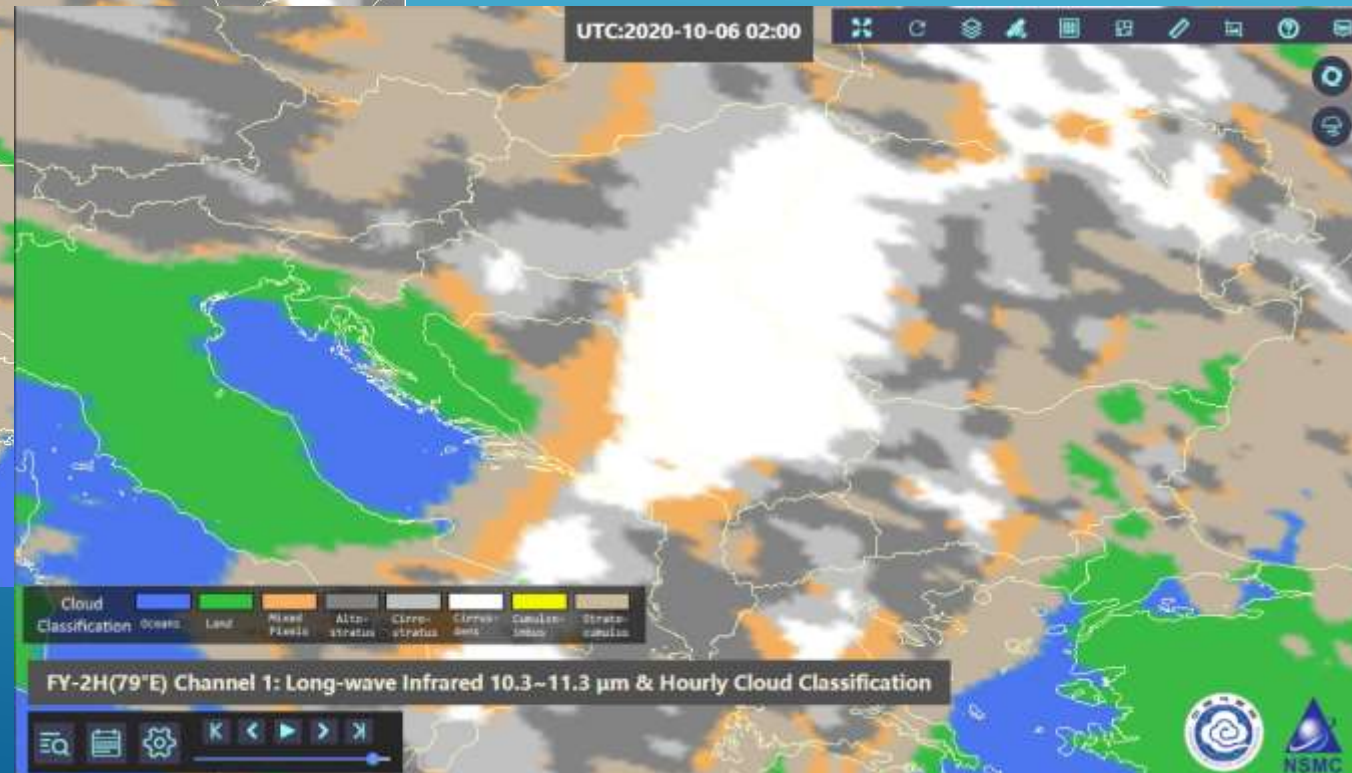
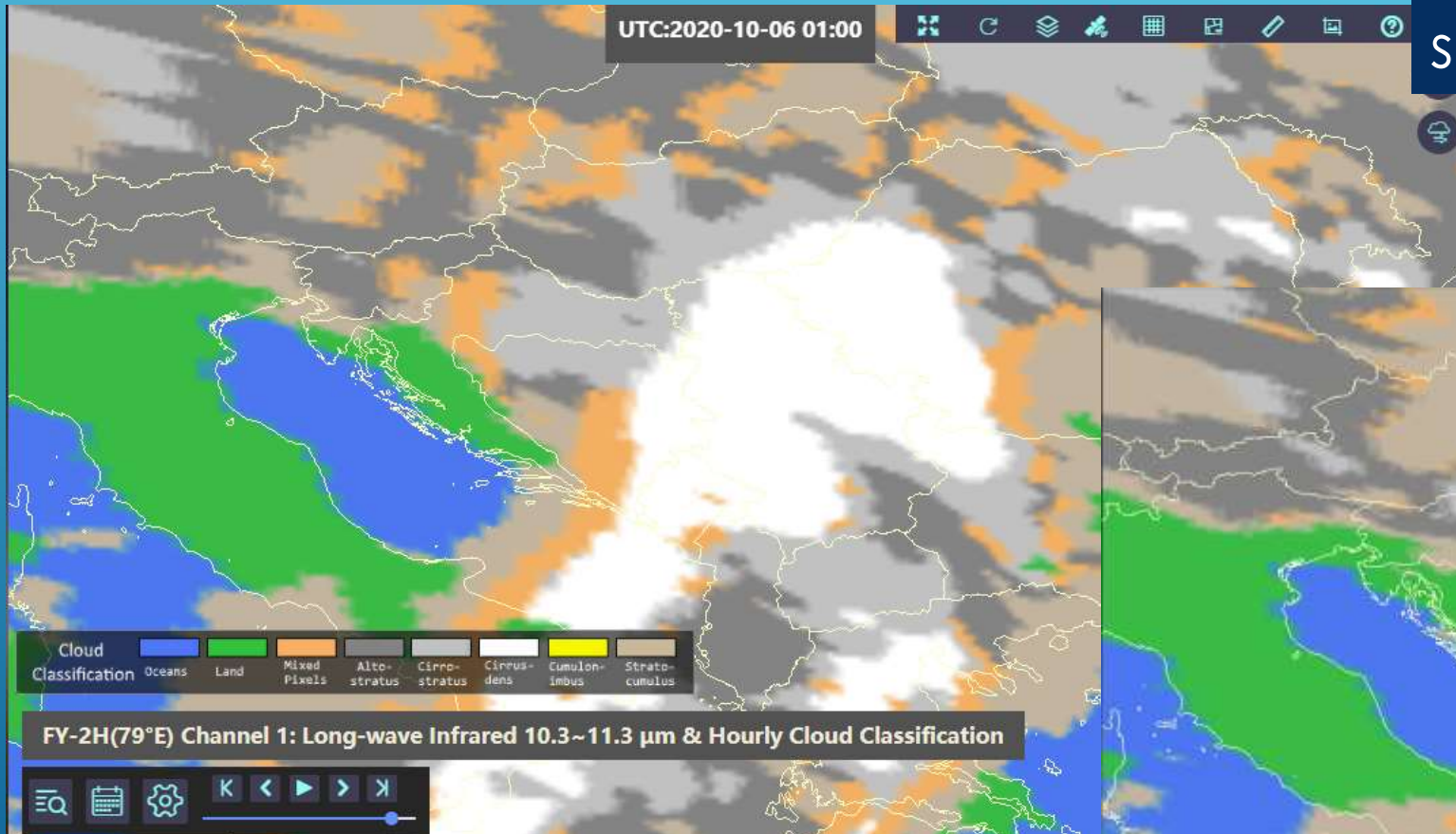
HUGE RAINFALL INTENSENSITY
OVER NIGHT 04/05 OCT
WITH
THUNDERING&LIGHTENING
AND WIND GUST

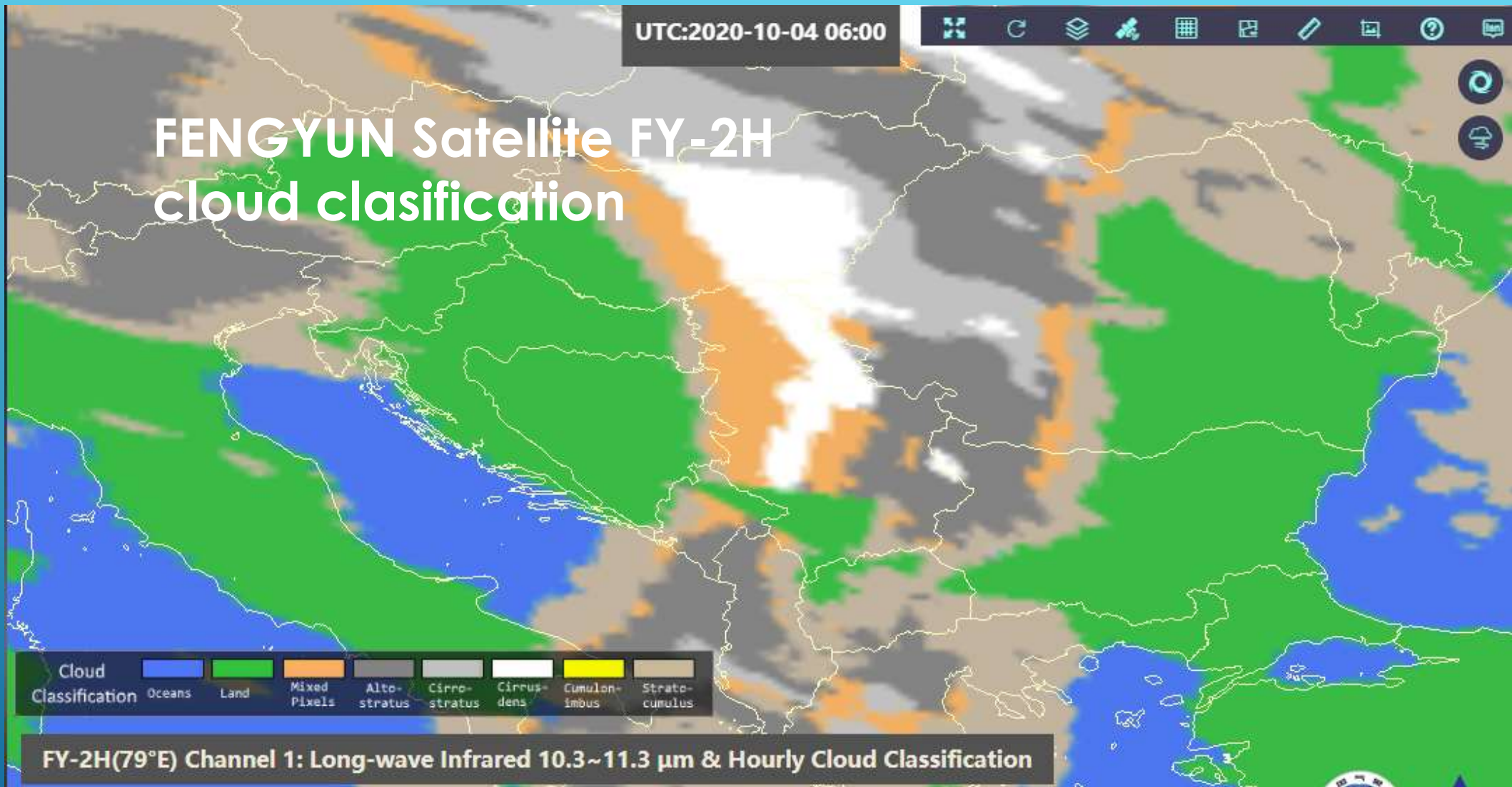


FENGYUN SATELLITE FY-2H CLOUD CLASIFICACION

Monday night, 05/06 Oct 2020
South Eastern Europa

Ciruss dens, altostratus,
stratocumulus had prevailed





Monday night, 05/06 Oct 2020

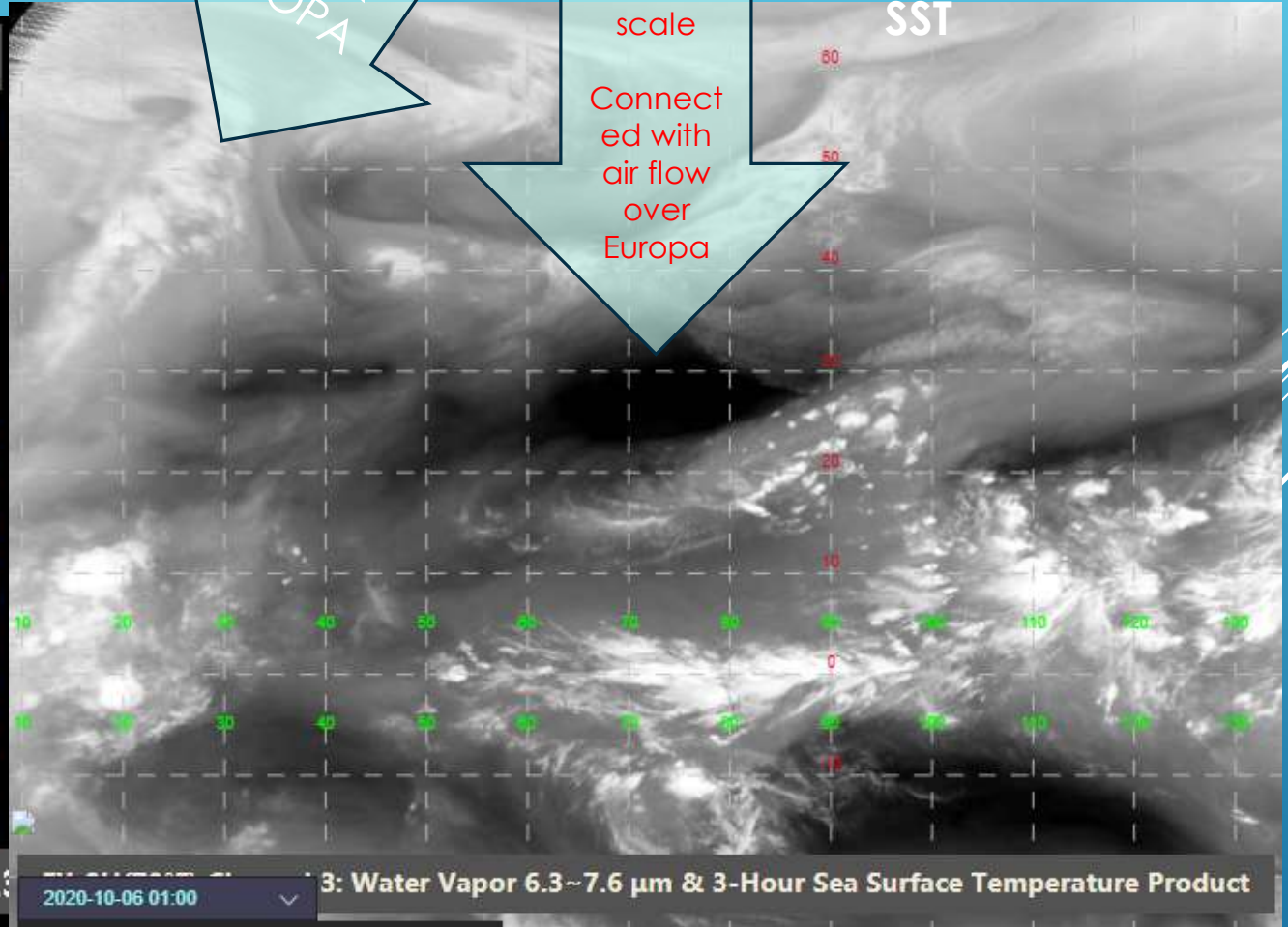
South Eastern Europa: Ciruss dens, altostratus, stratocumulus had prevailed

CONVECTIVE UNSTABILITY CAUSED LIGHTNING, TUNDER AND SEVERE RAIN INTENSITY

Cloud type animation by FY 2H



FY-2H Channel 1: Long-wave Infrared 10.3~11.3 μm

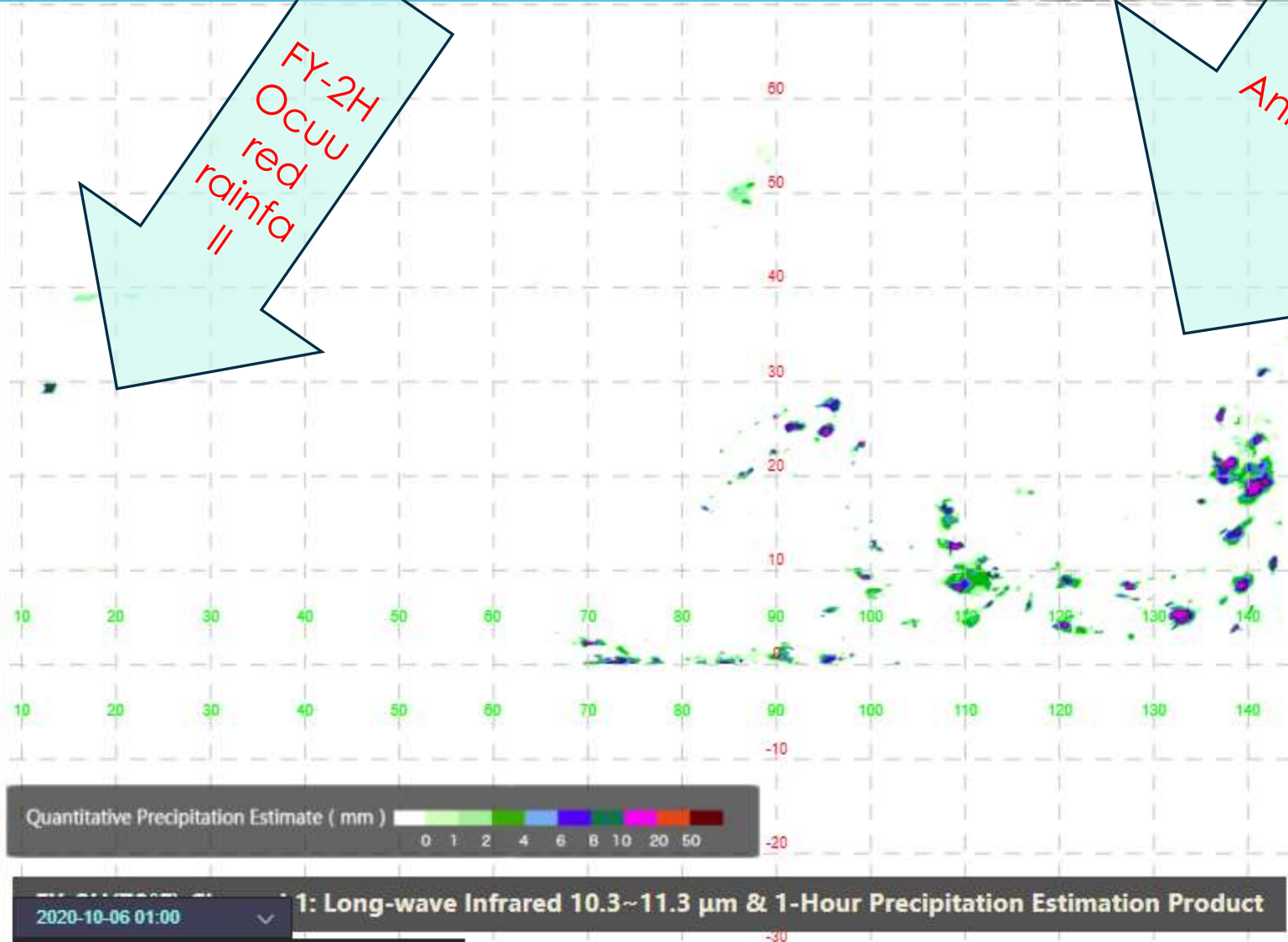


FY-2H Channel 3: Water Vapor 6.3~7.6 μm & 3-Hour Sea Surface Temperature Product

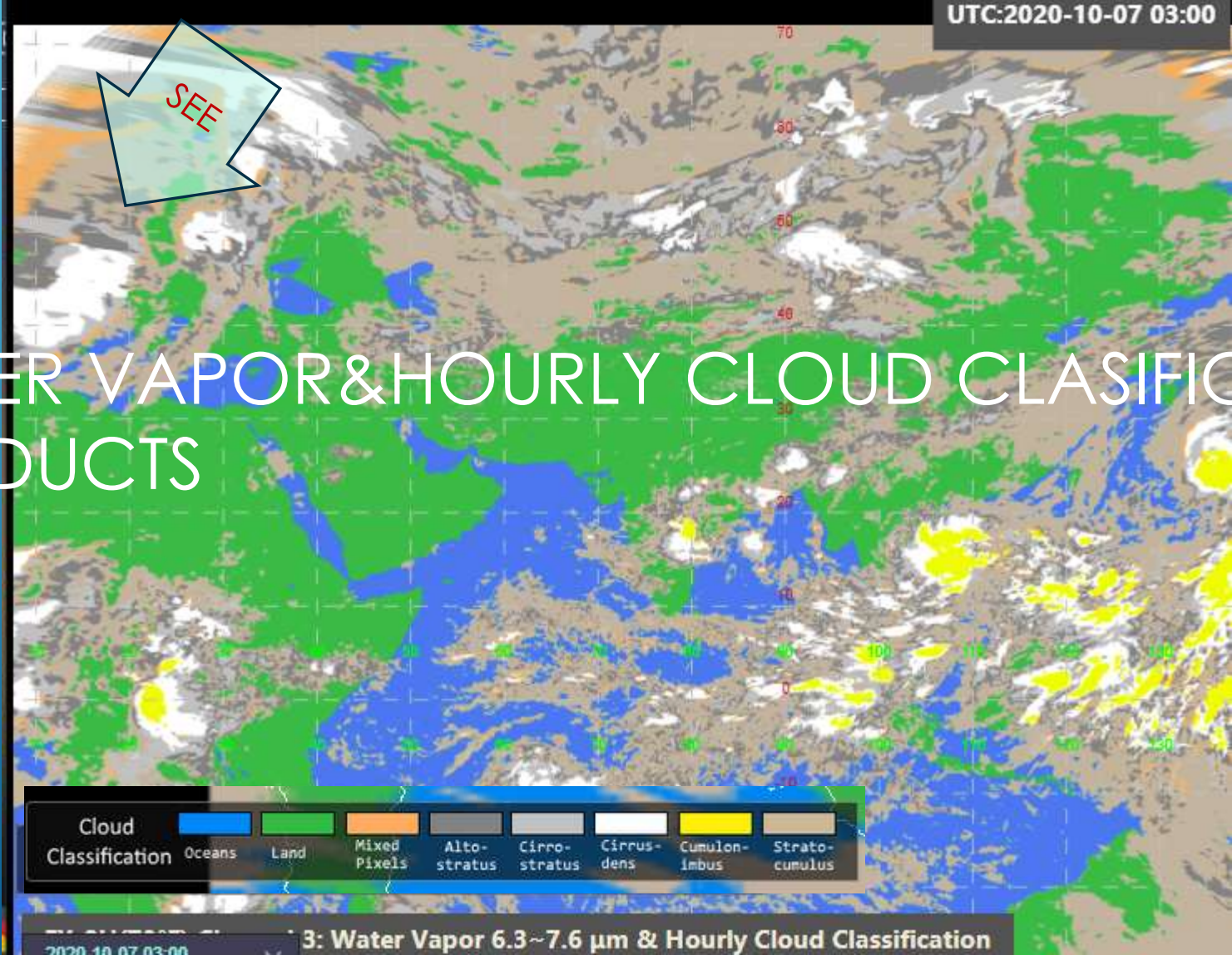
UTC : 2020-10-04 10:00

FY-2H
Ocuu
red
rainfa
II

FY-2H
Aurly
Animation



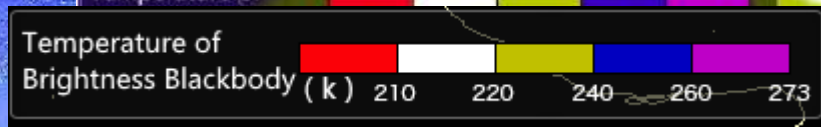
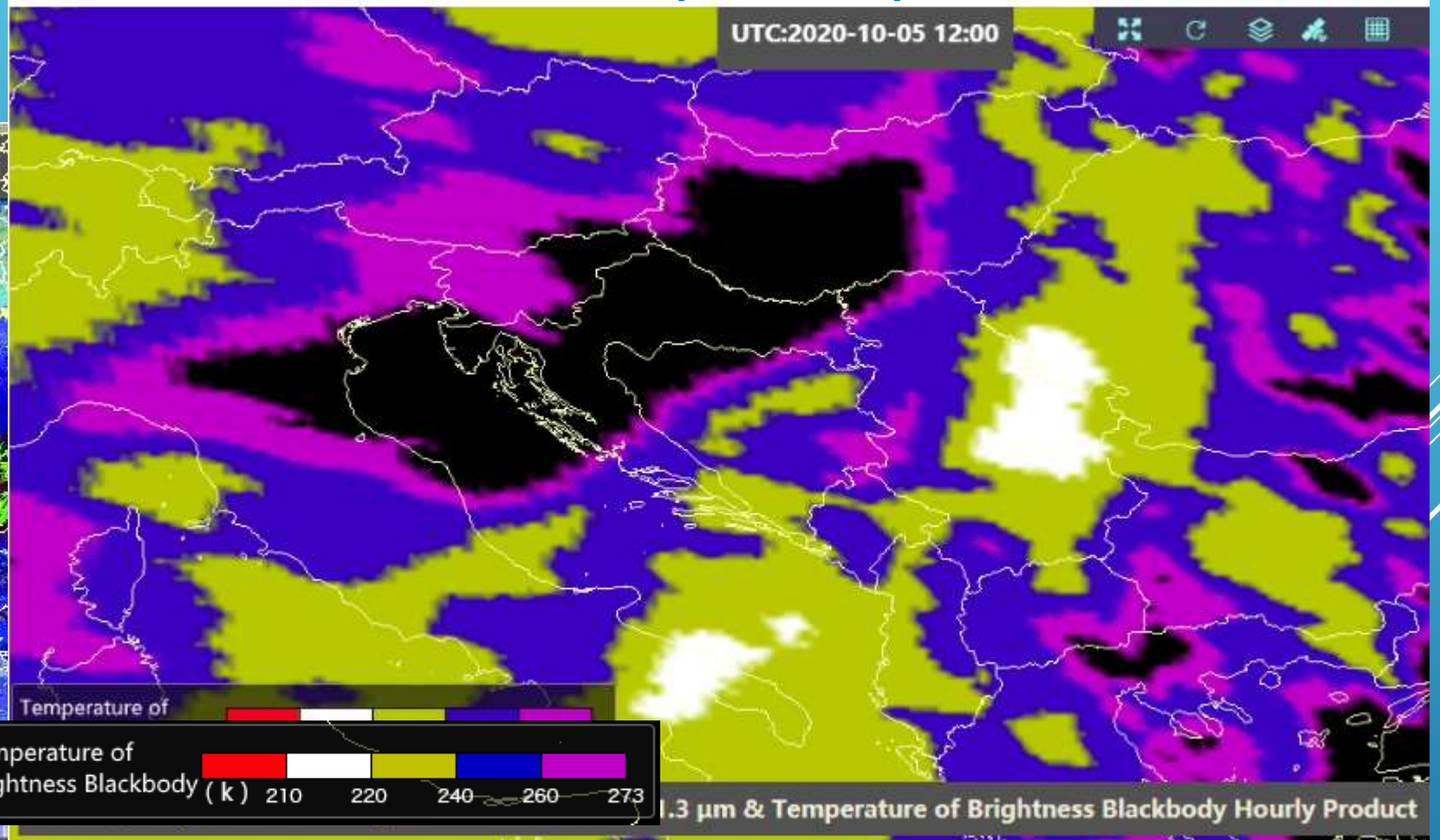
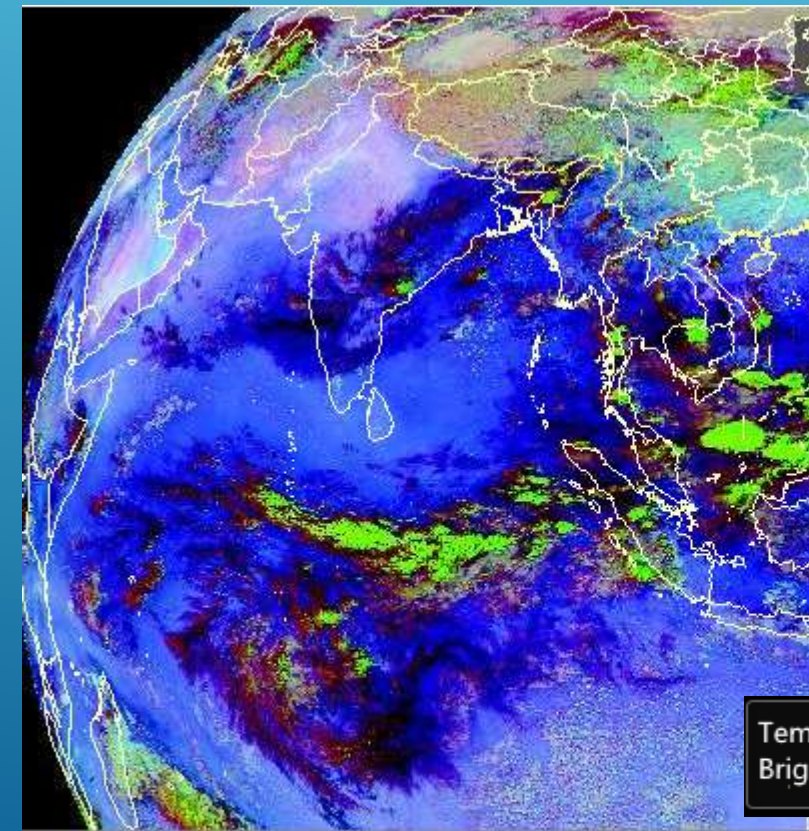
UNSTABLE WEATHER CONCONTINUES ON OCT, 07TH BRINGING HUGE RAINFALL



WATER VAPOR & HOURLY CLOUD CLASSIFICATION PRODUCTS



FY2H TBB (TEMPERATURE OF BRIGHTNESS BLACKBODY-LEFT AND NIGHT MICROPHYSICS (FY-4A)

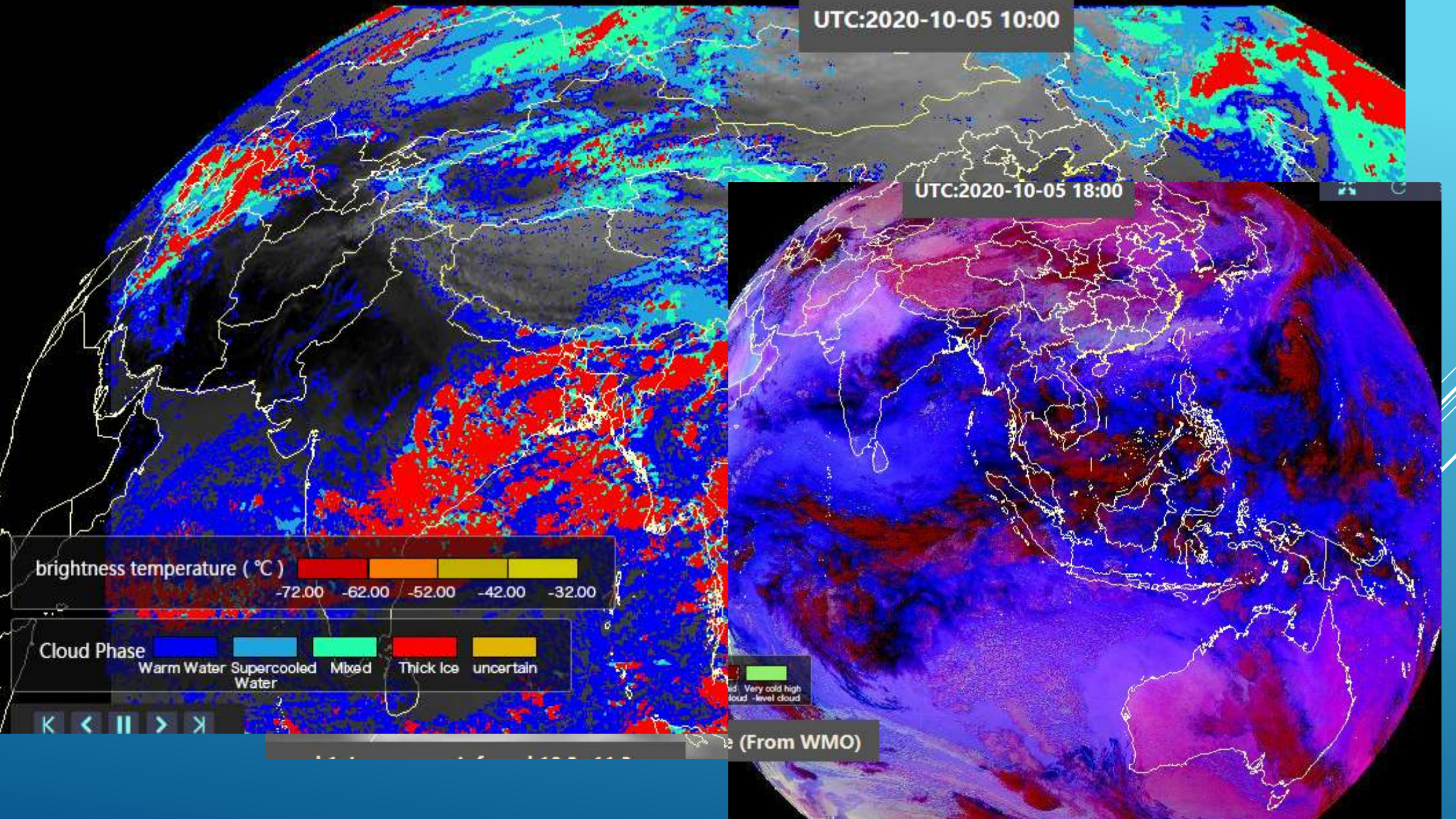


FY-4A Night Microphysics RGB Composite (From WMO)



UTC:2020-10-05 10:00

UTC:2020-10-05 18:00



brightness temperature (°C)

-72.00	-62.00	-52.00	-42.00	-32.00

Cloud Phase

Warm Water	Supercooled Water	Mixed	Thick Ice	uncertain	

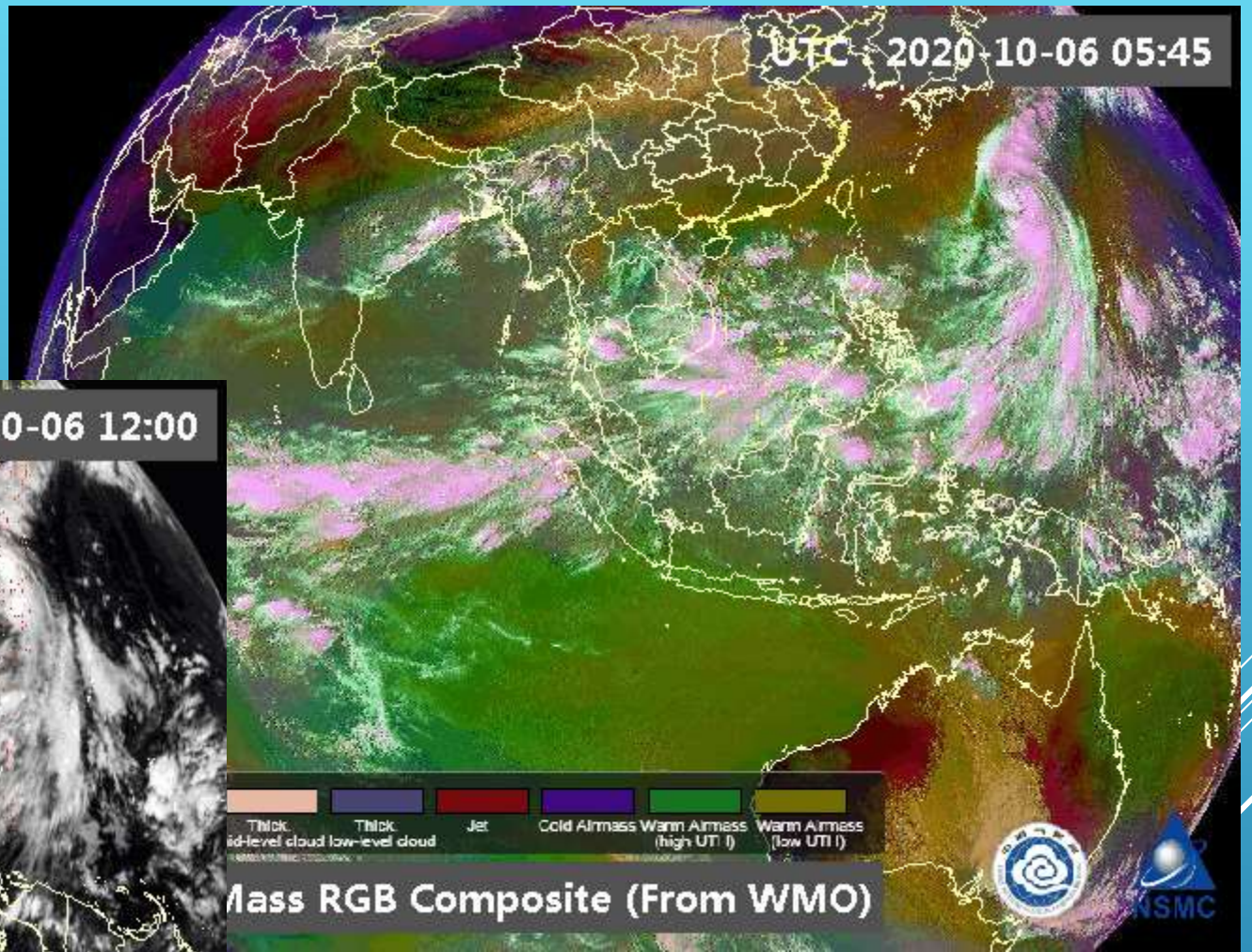
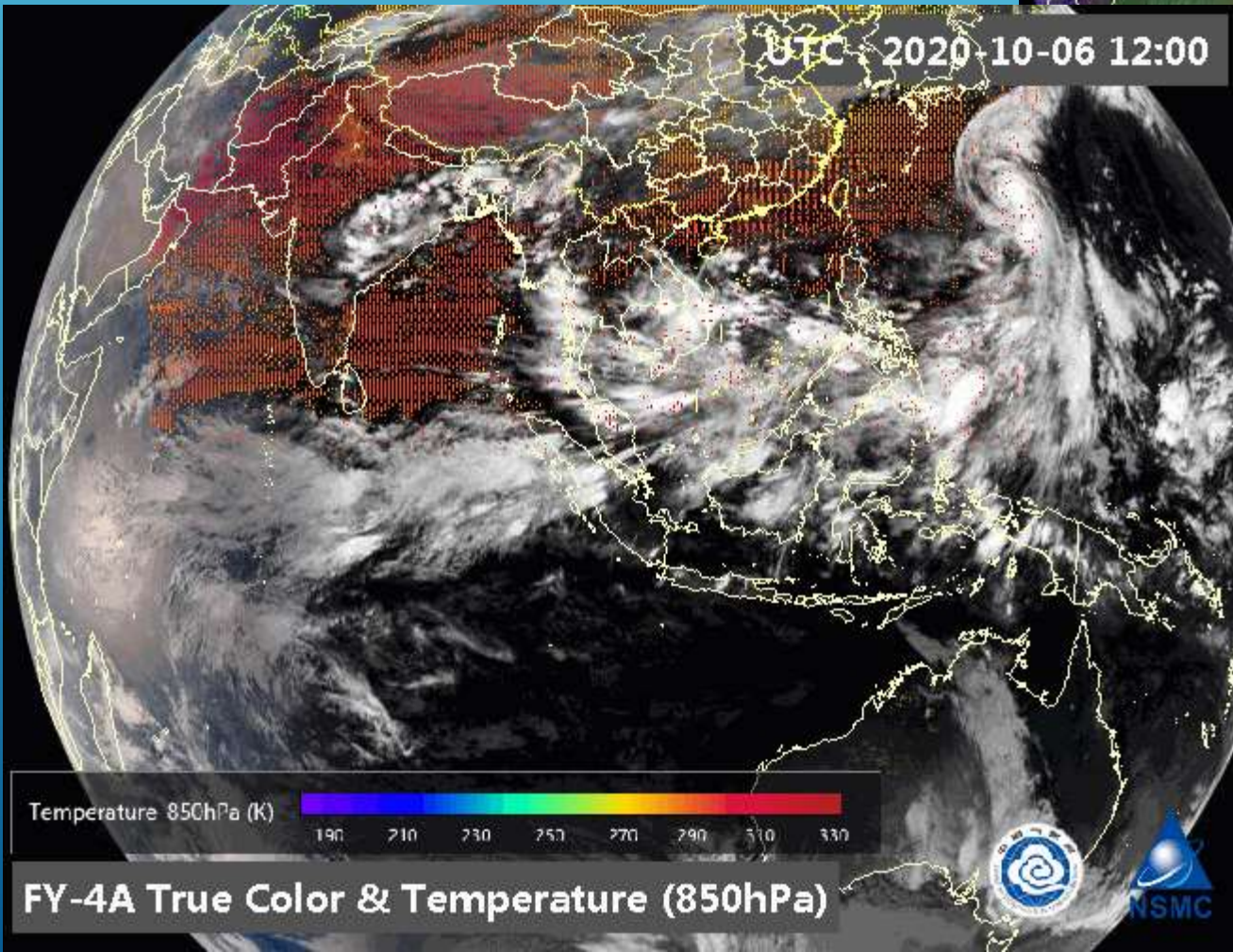
Very cold high level cloud

Navigation controls: K, <, ||, >, X

(From WMO)

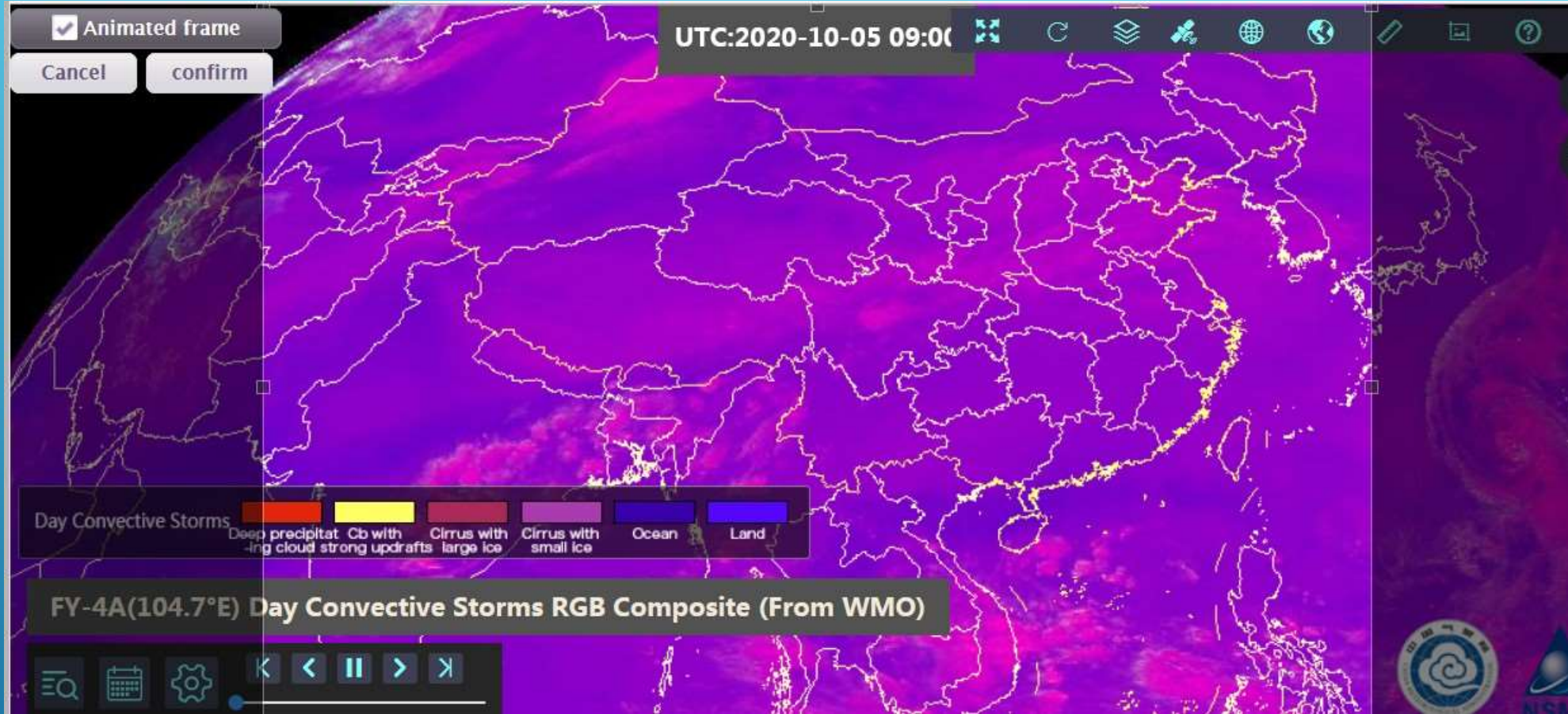
FY-4A PRODUCTS

TEMPERATURE 850HP



TYPHON PRODUCT FY-A4 ON OCT 6TH 2020





CONVECTIVE STORM –RGB COMPOSITE BY FY-4A
A DAY BEFORE